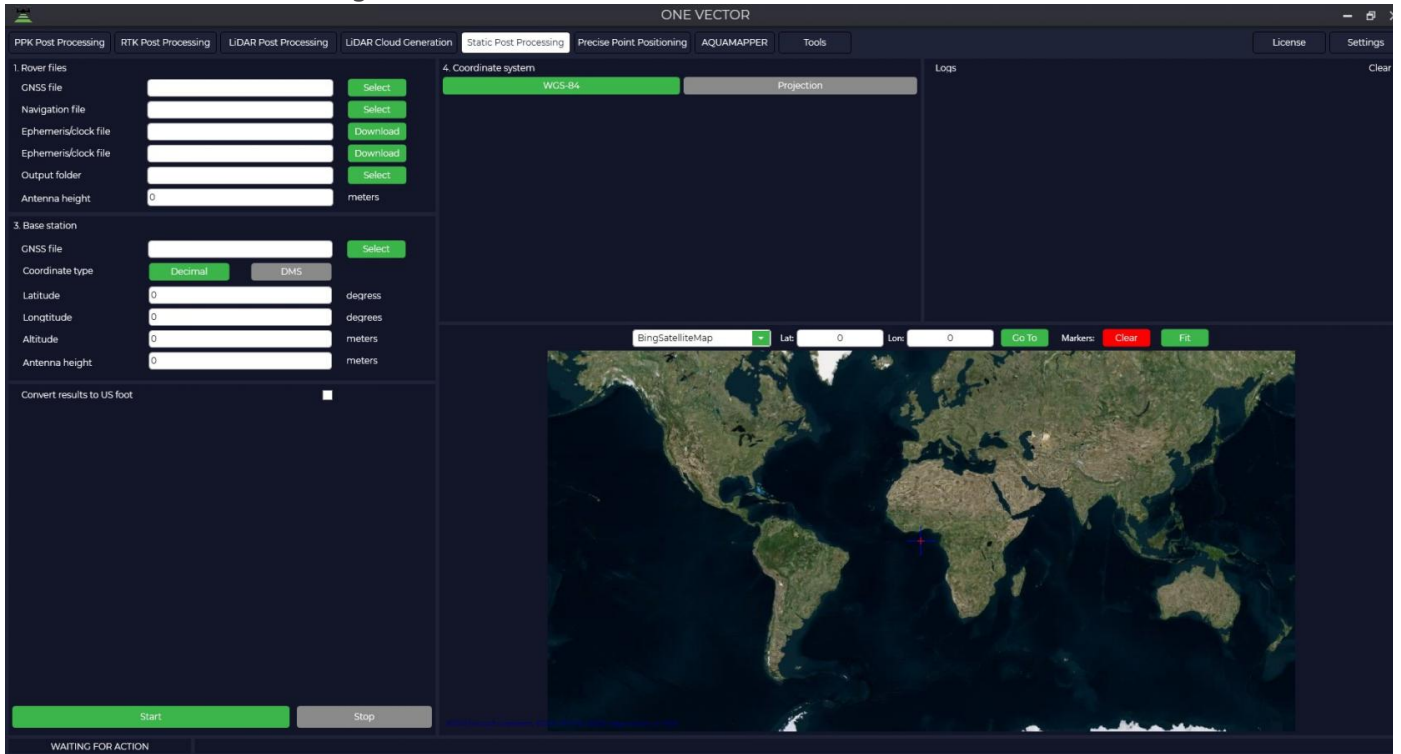
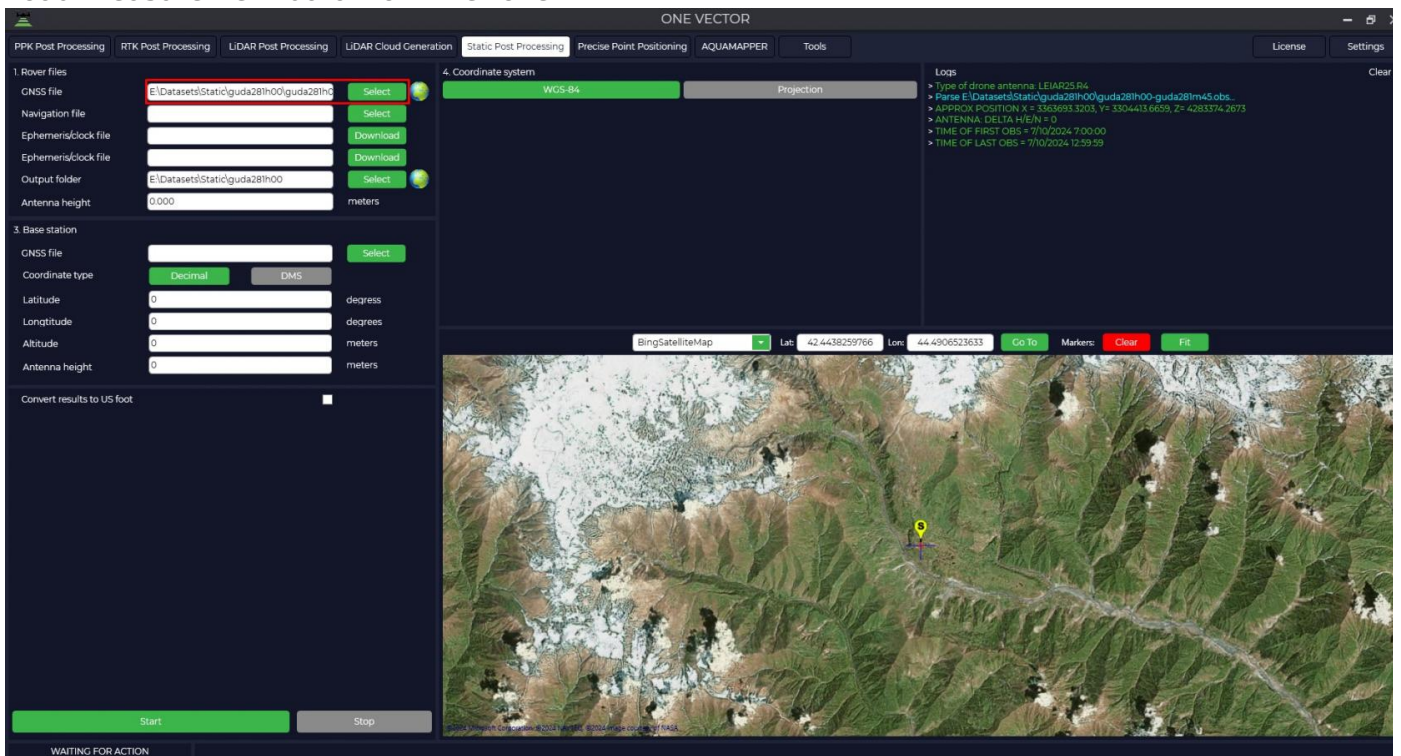


# One vector

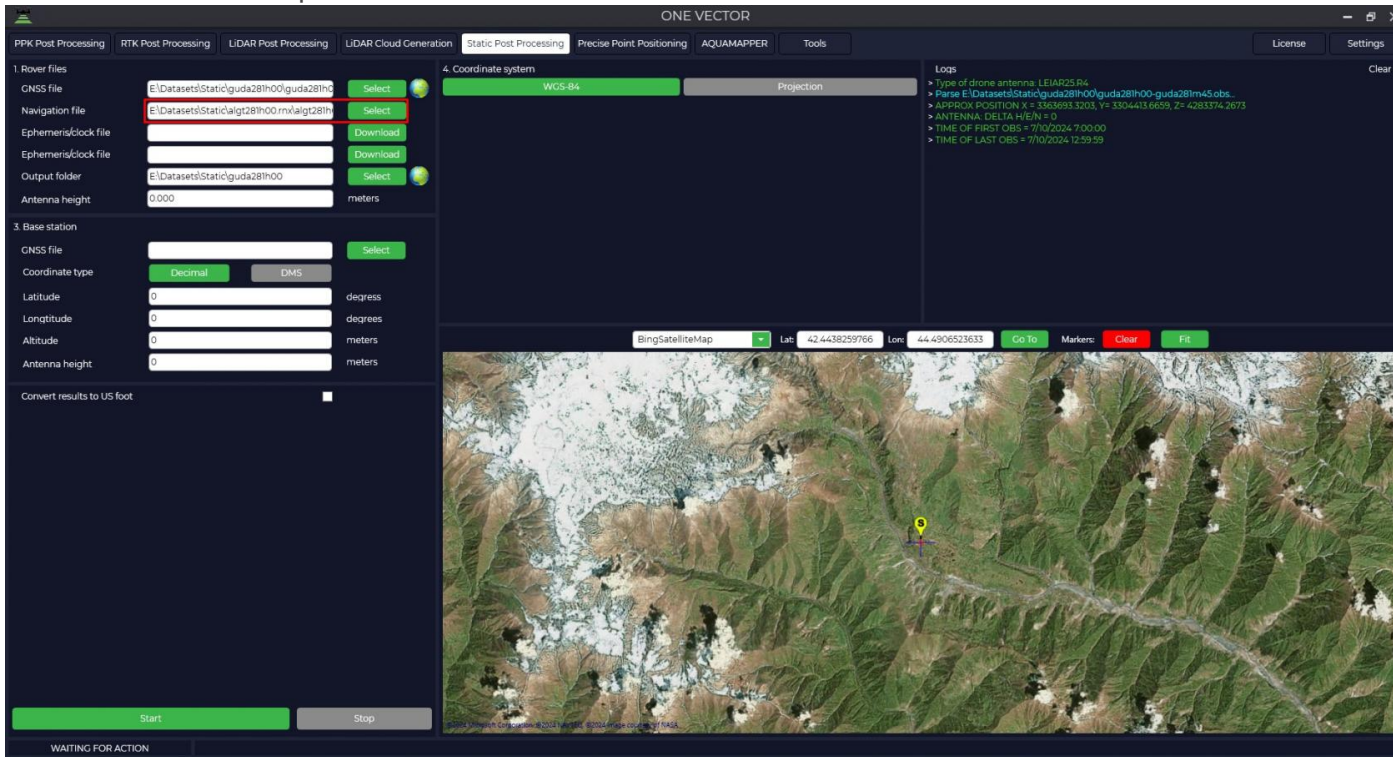
1. To start this module it is necessary to open the TOPODRONE Post Processing program, go to the Static Post Processing tab and click on the "One vector" button.



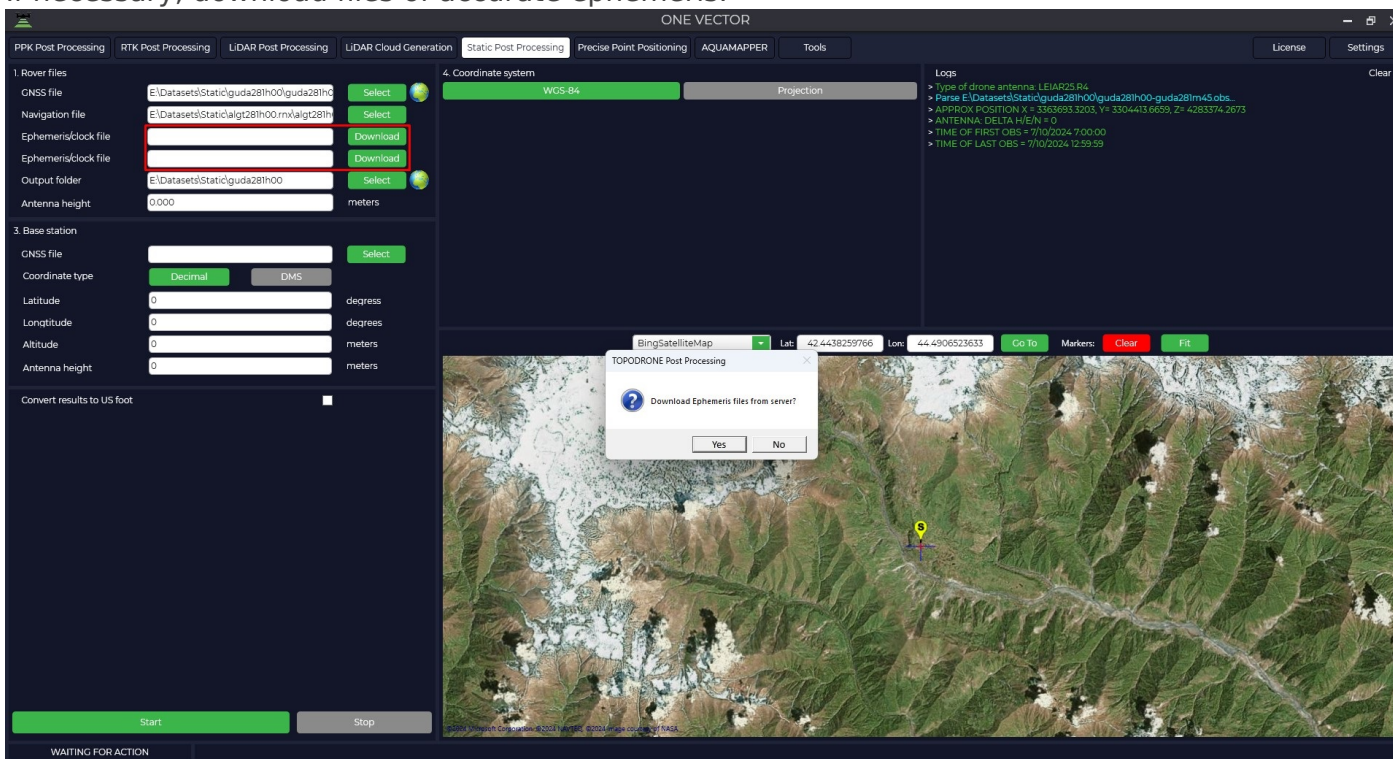
2. Load measurement data from the rover.



### 3. Download airborne ephemeris data.

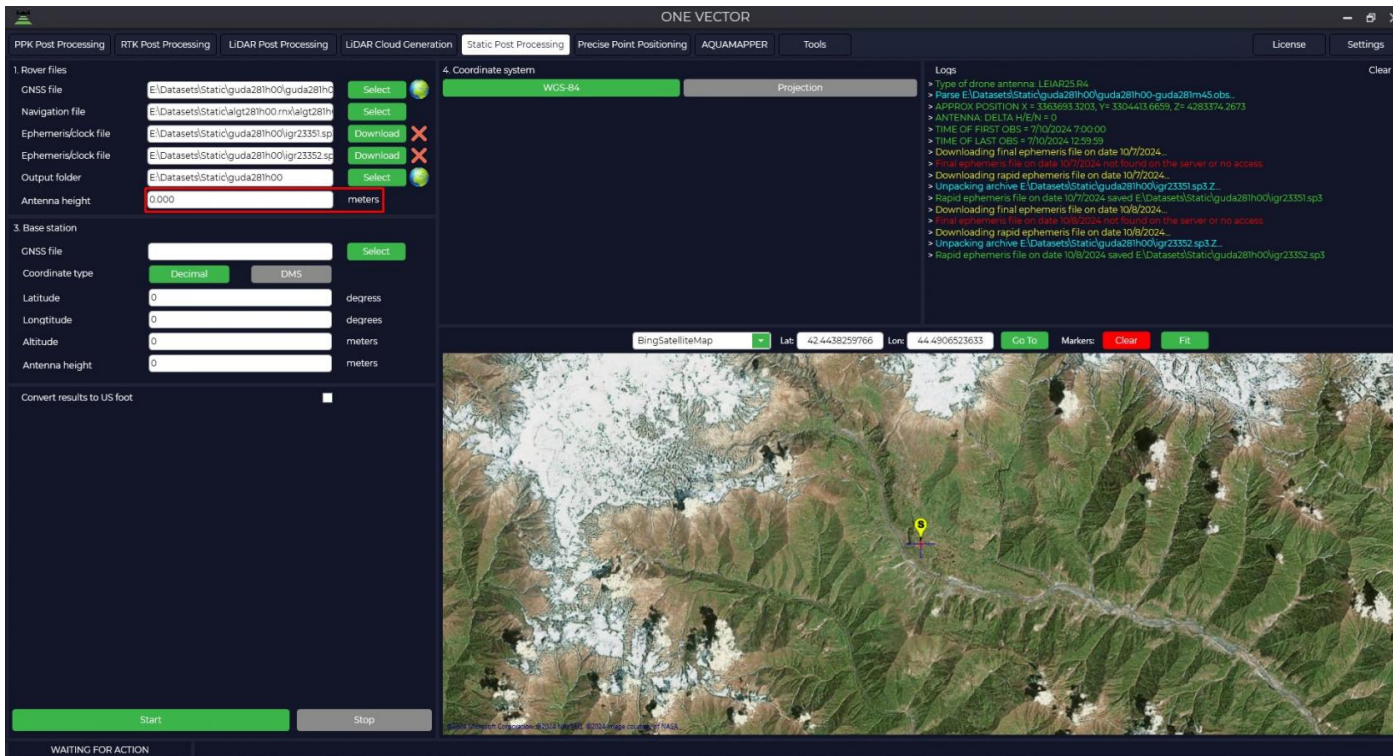


### 4. If necessary, download files of accurate ephemeris.

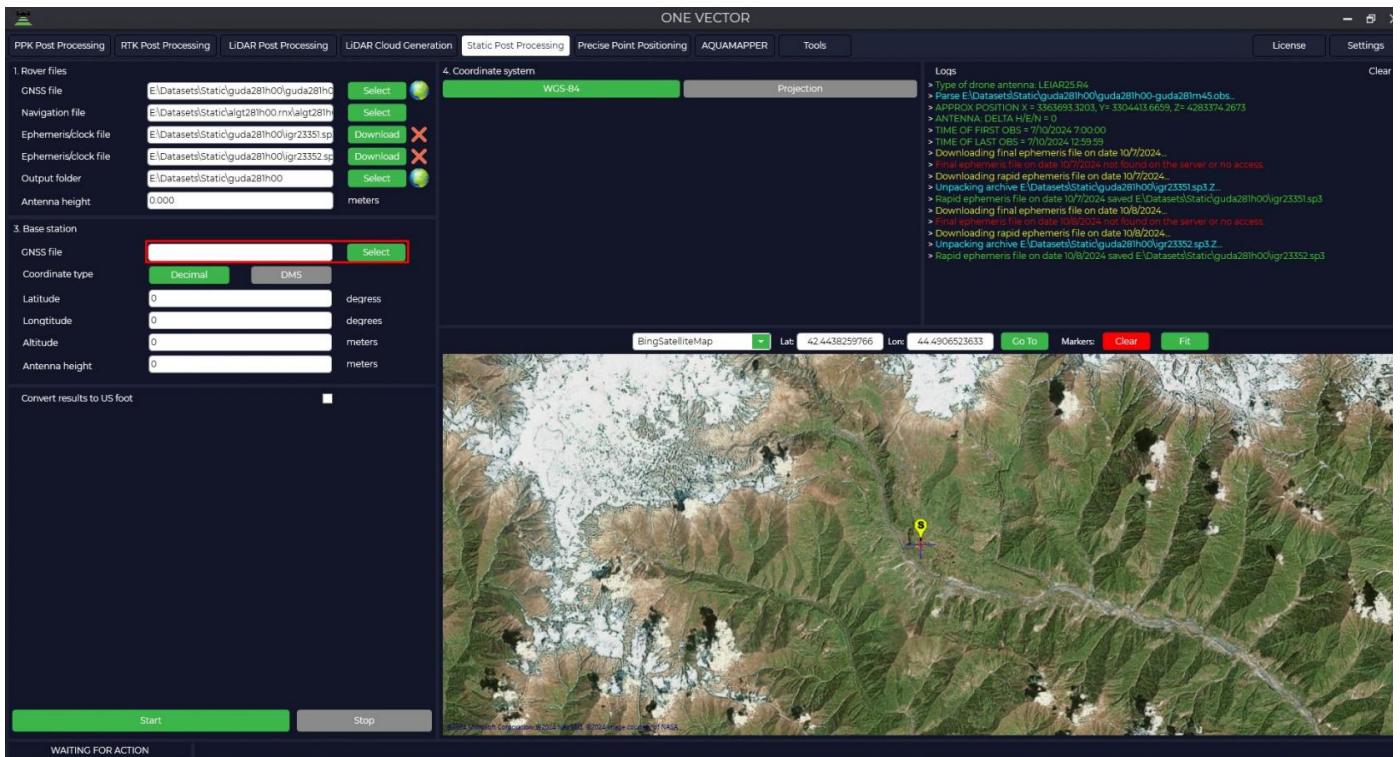



### 5. Enter the height of the rover antenna.

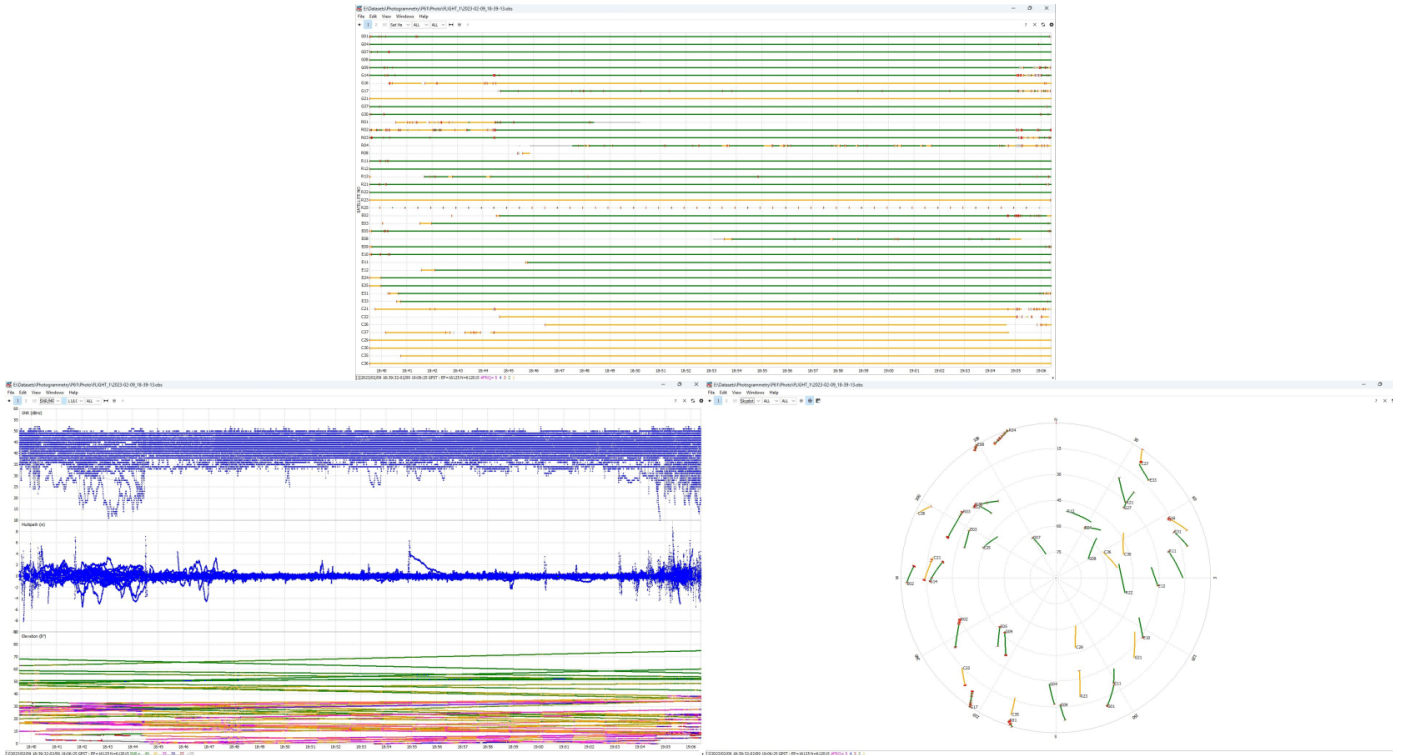
The height of the antenna includes the height of the milestone or tripod from the measuring point to the bottom of the receiver mount and the height from the bottom of the receiver mount to the phase center.



## 6. Download measurement data from the base station.



7. After the files are uploaded, pressing the  button allows you to analyze the quality of the data. For more information about data quality analysis, see [Appendix B](#).



8. The program will automatically load the coordinates and height of the base antenna from the Rinex file, taking into account that it was entered during measurement and display the location on the map.

3. Base station

GNSS file	<input type="text" value="E:\Datasets\Static\algt281h00.rnx\algt281h"/>	<input type="button" value="Select"/> 
Coordinate type	<input checked="" type="button" value="Decimal"/> <input type="button" value="DMS"/>	
Latitude	<input type="text" value="41.3861281141"/>	degrees
Longitude	<input type="text" value="45.0368662161"/>	degrees
Altitude	<input type="text" value="328.865"/>	meters
Antenna height	<input type="text" value="0.000"/>	meters

9. In case your coordinate system is different from WGS-84, you need to click "Projection" button and select your coordinate system from the list or enter the coordinate system name in the search line, if necessary, select the geoid model. If your coordinate system is not in the list, you can add it to TOPODRONE Post Processing program.

#### 4. Coordinate system

WGS-84 Projection

Calibration

Elevation type

Projection

World-WGS 84-UTM-zone 38N (m) EPSG 32638

10. Selecting a coordinate system will convert from WGS-84 to the projection of your choice. If necessary, correct the coordinates of the base station.

The height of the antenna includes the height of the milestone or tripod from the point of known coordinates to the bottom of the receiver mount and the height from the bottom of the receiver mount to the phase center.

#### 3. Base station

GNSS file  Select 

Coordinate type  Decimal  DMS

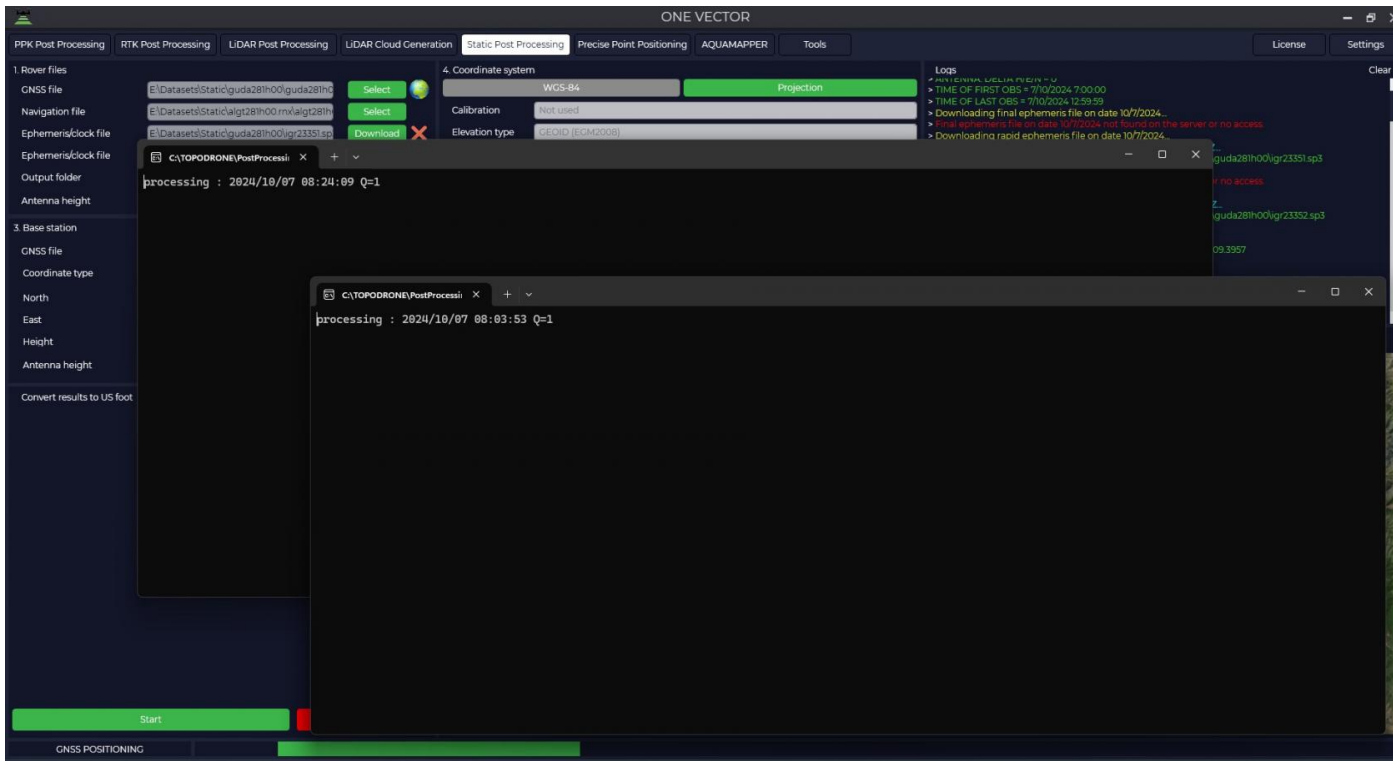
North  meters

East  meters

Height  meters

Antenna height  meters

After pressing the "Start" button, the program will proceed to calculations.



11. Upon completion of calculations the program will display a window with coordinates of base station and rover in WGS-84 coordinate system and local coordinate system and will offer to save these data to observation files for further use of these data. Also in the output data folder the file with the calculation results will be saved.

Caption



PRJ: World-WGS 84-UTM-zone 38N (m) EPSG 32638  
Elevation type: GEOID (EGM2008)

### Base:

----- WGS-84 -----  
Latitude: 41.38612811 degrees  
Longitude: 45.03686622 degrees  
Altitude: 328.865 meters

----- PRJ -----  
North: 4581623.0424 meters  
East: 503082.3404 meters  
Height: 313.5479 meters

### Rover:

----- WGS-84 -----  
Latitude: 42.4438271 degrees  
Longitude: 44.49065247 degrees  
Altitude: 1869.817 meters

----- Accuracy -----  
Accuracy Latitude: 0.0493 meters  
Accuracy Longitude: 0.0124 meters  
Accuracy Altitude: 0.0688 meters

----- PRJ -----  
North: 4699181.4077 meters  
East: 458111.3929 meters  
Height: 1849.2161 meters

Revision #12

Created 6 August 2024 07:18:35 by TOPODRONE SUPPORT

Updated 20 June 2025 15:23:37 by TOPODRONE SUPPORT