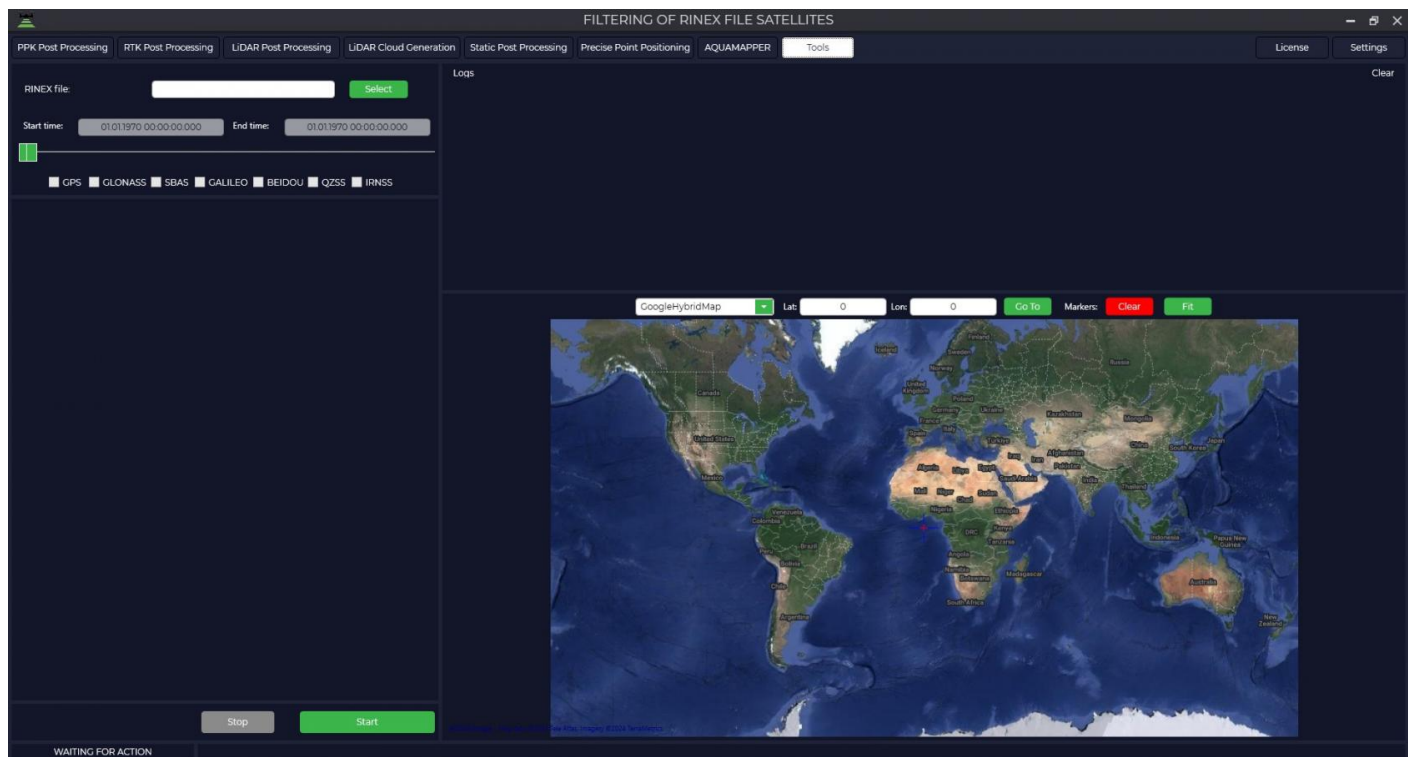


Satellite filtering


This module allows you to exclude certain satellite constellations or specific satellites from the observation file, which may be necessary to improve data quality.

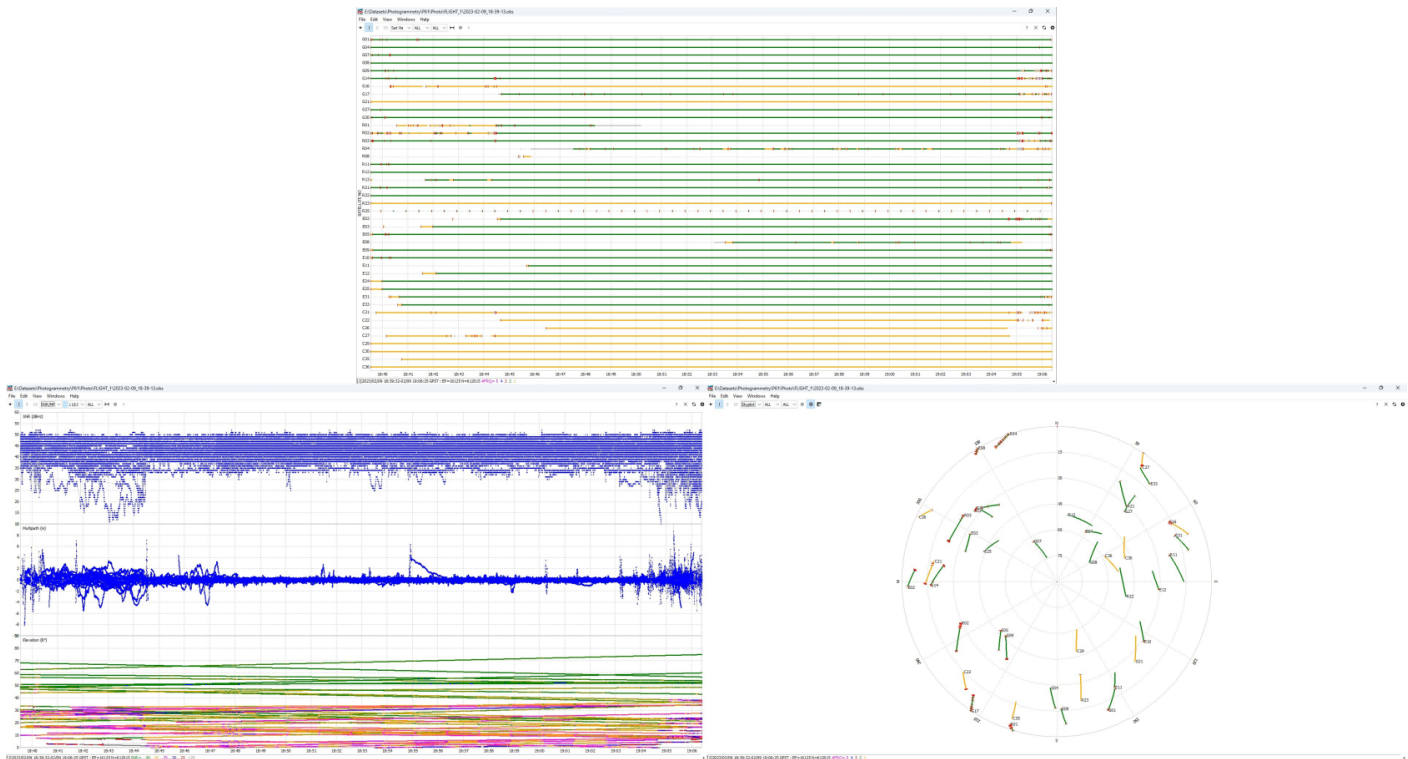
Follow the steps below to filter satellites: Go to the "Tools" tab and select "Rinex", then "Satellite Filtering".



In the upper left part of the RINEX file window click the "Select" button and specify the raw observations file in *.obs format.



Click on the icon to view the signal quality  to open the "Plot" window, which allows you to understand which satellites may be interfering with data processing. For more information about data quality analysis, see [Appendix B](#).



Move the sliders left and right if necessary to change the start and end time of the file.



The figure shows a control panel for file selection and time range. It includes a text input field for the RINEX file path: "E:\Datasets\Photogrammetry\TOPODROI", a green "Select" button, and a globe icon. Below this, there are two time input fields: "Start time: 06.07.2023 15:04:21.000" and "End time: 06.07.2023 16:16:59.000". A red-bordered slider is positioned below the time fields. At the bottom, there are checkboxes for satellite constellations: GPS, GLONASS, SBAS, GALILEO, BEIDOU, QZSS, and IRNSS.

Uncheck the required checkboxes if you want to exclude certain satellite constellations (GPS, GLONASS, GALILEO and BEIDOU) or specific satellites.

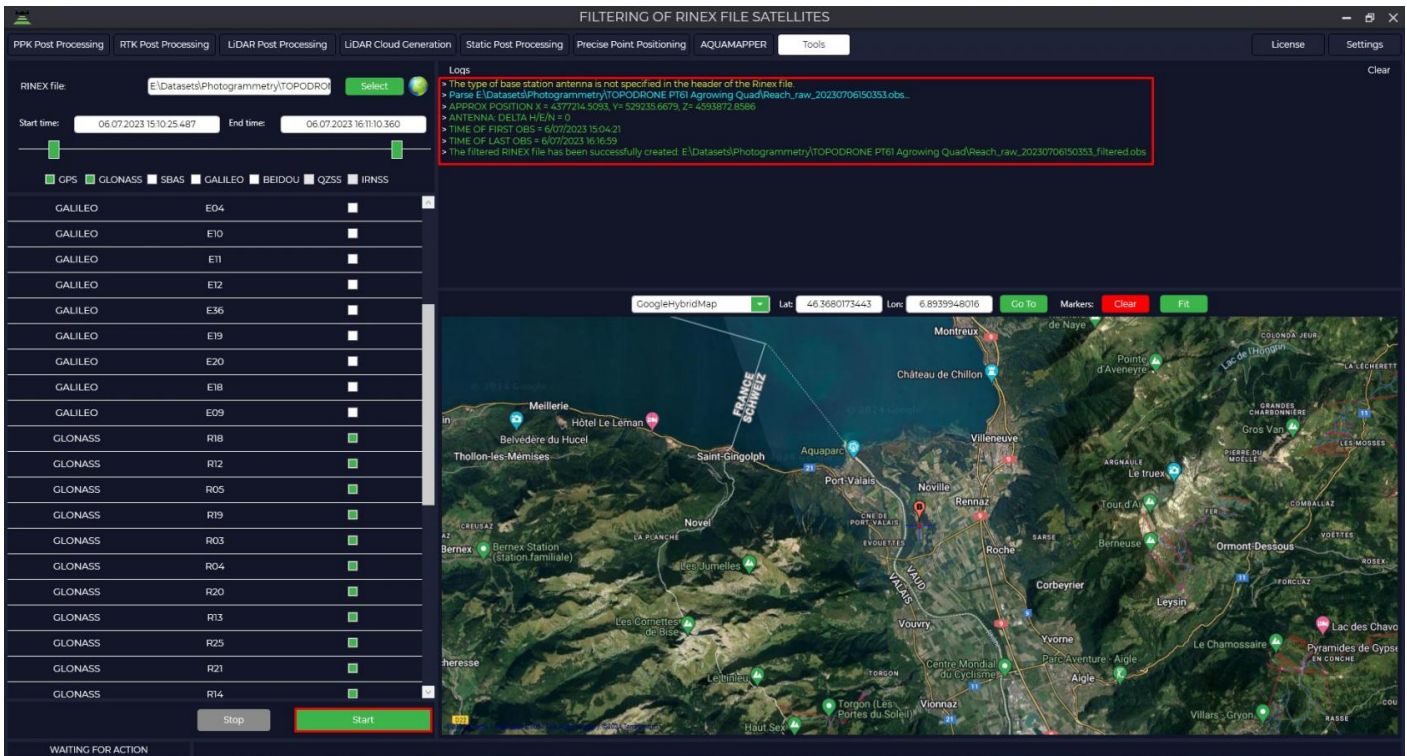
RINEX file: 

Start time: End time:

GPS GLONASS SBAS GALILEO BEIDOU QZSS IRNSS

BEIDOU	C19	<input checked="" type="checkbox"/>
BEIDOU	C20	<input checked="" type="checkbox"/>
BEIDOU	C29	<input checked="" type="checkbox"/>
BEIDOU	C35	<input checked="" type="checkbox"/>
BEIDOU	C12	<input checked="" type="checkbox"/>
BEIDOU	C09	<input checked="" type="checkbox"/>
BEIDOU	C16	<input checked="" type="checkbox"/>
BEIDOU	C22	<input checked="" type="checkbox"/>
BEIDOU	C06	<input checked="" type="checkbox"/>
GALILEO	E04	<input checked="" type="checkbox"/>
GALILEO	E10	<input checked="" type="checkbox"/>
GALILEO	E11	<input checked="" type="checkbox"/>
GALILEO	E12	<input checked="" type="checkbox"/>
GALILEO	E36	<input checked="" type="checkbox"/>
GALILEO	E19	<input checked="" type="checkbox"/>
GALILEO	E20	<input checked="" type="checkbox"/>
GALILEO	E18	<input checked="" type="checkbox"/>
GALILEO	E09	<input checked="" type="checkbox"/>
GLONASS	R18	<input checked="" type="checkbox"/>
GLONASS	R12	<input checked="" type="checkbox"/>

Press the "Start" button. The program will save the new file, excluding the selected satellites from it.



Once the satellite filtering operation has been successfully completed, you can use the resulting file for further data processing.

Revision #4

Created 12 August 2024 10:58:10 by TOPODRONE SUPPORT

Updated 26 November 2025 15:40:57 by TOPODRONE SUPPORT