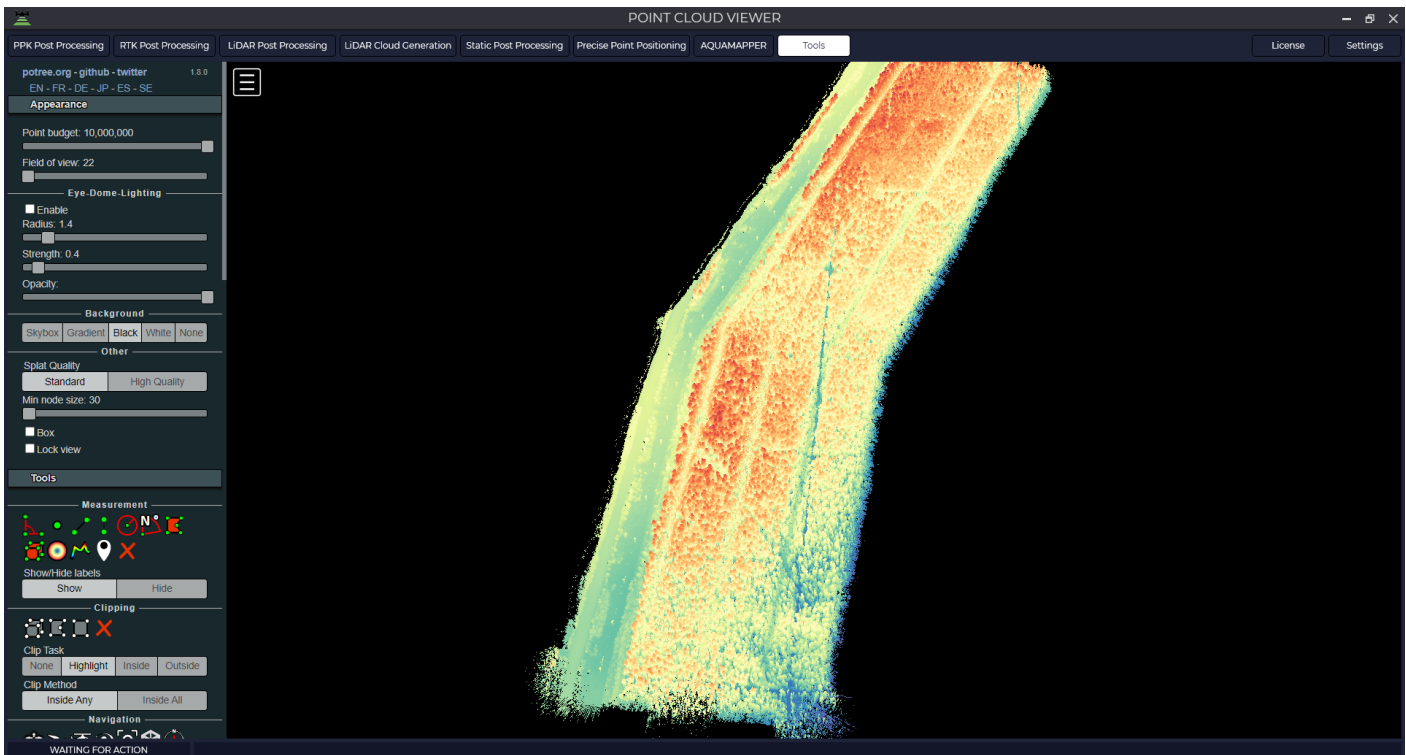
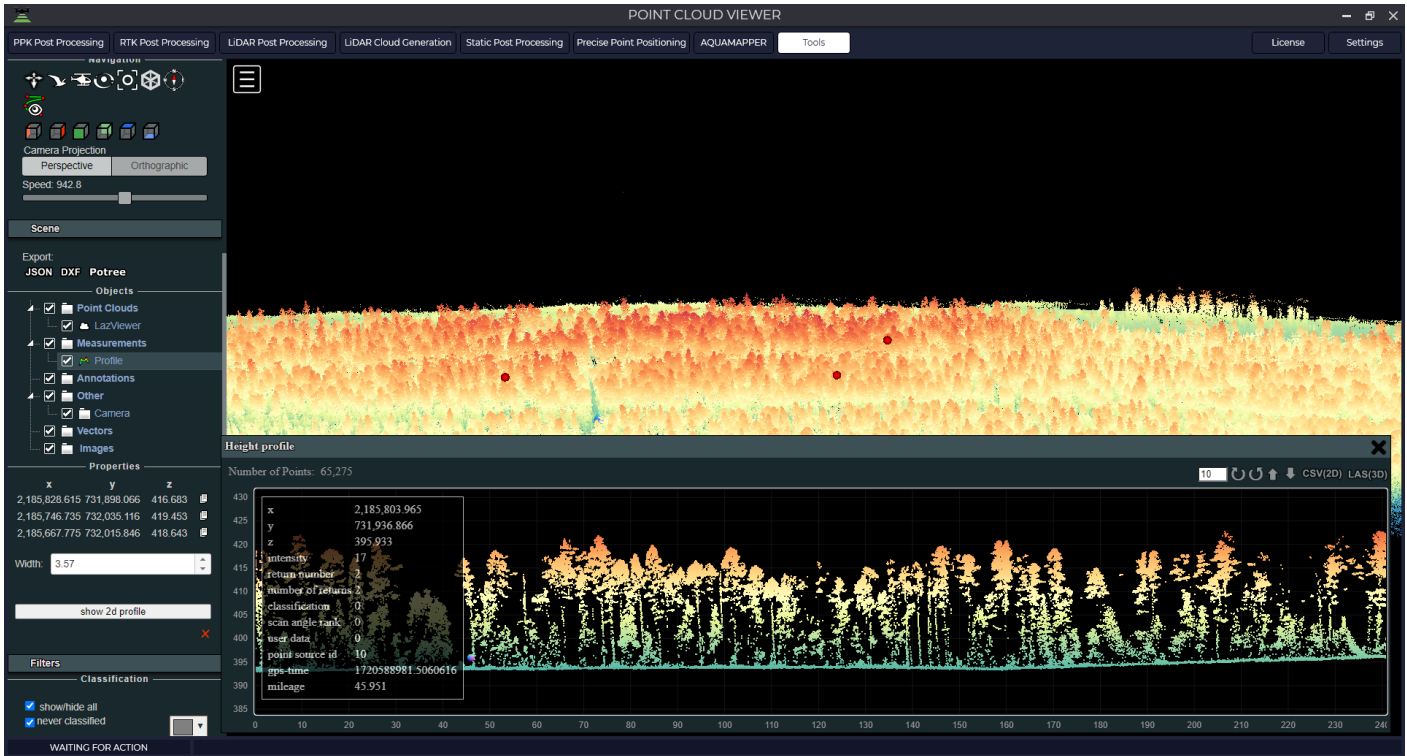


Viewing the point cloud

This tool is intended for viewing and analyzing the point cloud obtained during processing in TOPODRONE Post Processing software. To start the module, go to the Tools tab, then Viewers and click on the New button. If you need to open a point cloud that has just been closed, select Previous. In the opened tab select the point cloud in *.las or *.laz format. After loading, the point cloud will be displayed in the main window.





Revision #5

Created 6 August 2024 14:42:52 by TOPODRONE SUPPORT

Updated 26 November 2025 15:40:56 by Dmitriy